

Front End Housings

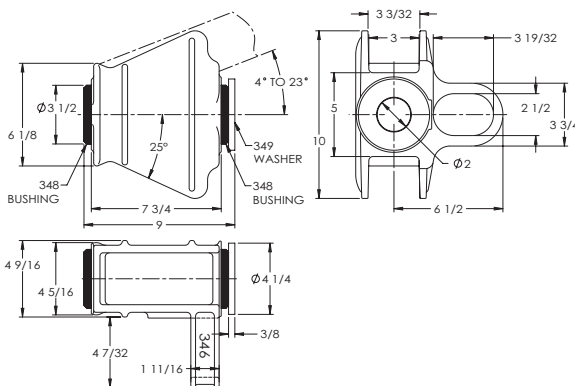
340S/340SA Front End Housing

Accepts 3 in. (76 mm) standard channel or square tubing.

Parts Included:

- 346 Housing
- 349 Washer
- 348 or *348A Bushings

*340SA comes with 348A Poly Bushings



SPECIFICATIONS

Bushing Replacement: 348 (Rubber) or 348A (Poly)
Designed For Use With: 207S, 307S or 405S Swivel Drawbar Eyes Only

Inside Diameter: 2 in. (51 mm)
Outside Diameter: 3 1/2 in. (89 mm)
Length: 3 1/2 in. (89 mm)
Unit Weight: 26.3 lbs. (11.9 kg)

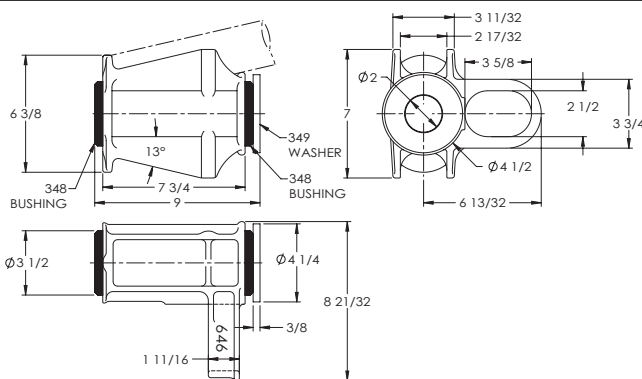
640S/640SA Front End Housing

Accepts 2 1/2 in. (64 mm) round tubing.

Parts Included:

- 646 Housing
- 349 Washer
- 348 or *348A Bushings

*640SA comes with 348A Poly Bushings



SPECIFICATIONS

Bushing Replacement: 348 (Rubber) or 348A (Poly)
Designed For Use With: 207S, 307S or 405S Swivel Drawbar Eyes Only

Inside Diameter: 2 in. (51 mm)
Outside Diameter: 3 1/2 in. (89 mm)
Length: 3 1/2 in. (89 mm)
Unit Weight: 18.7 lbs. (8.5 kg)

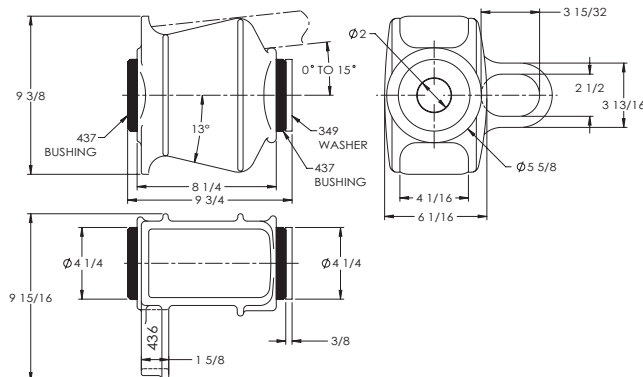
435/435A Front End Housing

Accepts 2 in. x 4 in. (51 mm x 102 mm) rectangular tubing or standard channel.

Parts Included:

- 436 Housing
- 349 Washer
- 437 or *437A Bushings

*435A comes with 437A Poly Bushings



SPECIFICATIONS

Bushing Replacement: 437 (Rubber) or 437A (Poly)
Designed For Use With: 207S, 307S or 405S Swivel Drawbar Eyes Only

Inside Diameter: 2 in. (51 mm)
Outside Diameter: 4 1/4 in. (108 mm)
Length: 4 1/2 in. (114 mm)
Unit Weight: 36.7 lbs. (16.6 kg)

IMPORTANT GUIDELINES that apply to all Premier Front End Housings

- Never attempt weld repair of damaged or worn drawbar eyes or front end housings
- Clean and inspect drawbar eyes and eye housings for damage or excessive wear before each and every use
- All welds should be performed by a certified welder skilled in structural welding practices
- Drawbar structure as well as welds attaching front end housing to drawbar must be of sufficient strength to withstand the load rating of the drawbar eye
- Do not bind-up (Jackknife) any application as stresses can cause damage to products or components, resulting in failure and detachment of the trailer while in use

